



c-vision™ Lite

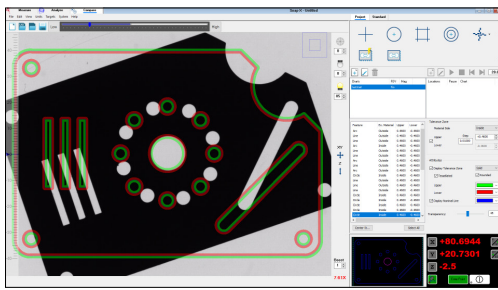
**c-vision Lite**, the ultimate shop floor video contour projector that sits on a workbench, has the largest measuring range in its class, and offers:

- **Accurate Image/Low Distortion –** Provided by the standard telecentric, wide field, single magnification low mag lens. The CNC motorized internal three-lens turret can be used in an automatic program with the optional additional mid and high mag lenses.
- **Rugged Design –** The manual XY table motion is driven by precision linear scales and fine adjusters. The helix stage is perfect for checking threads. All LED illumination for ultra-bright, long-life.
- **SNAP-X™: Powerful Software –** Display standard and custom overlay charts in Compare mode; Launch Measure mode for fully automatic video measurement; perform GD&T fitting in Analyze mode.

## Shop Floor Video Contour Projector®

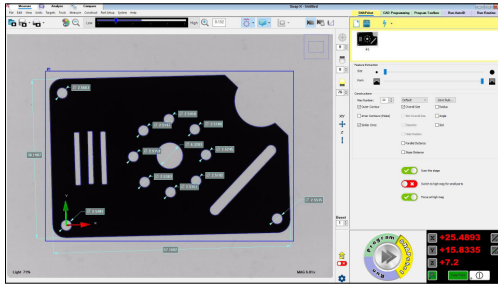


Top image: Digital Turret Assembly option with three objective lenses.  
Machine image: Shown with optional LED ring light and motorized XY worktable.



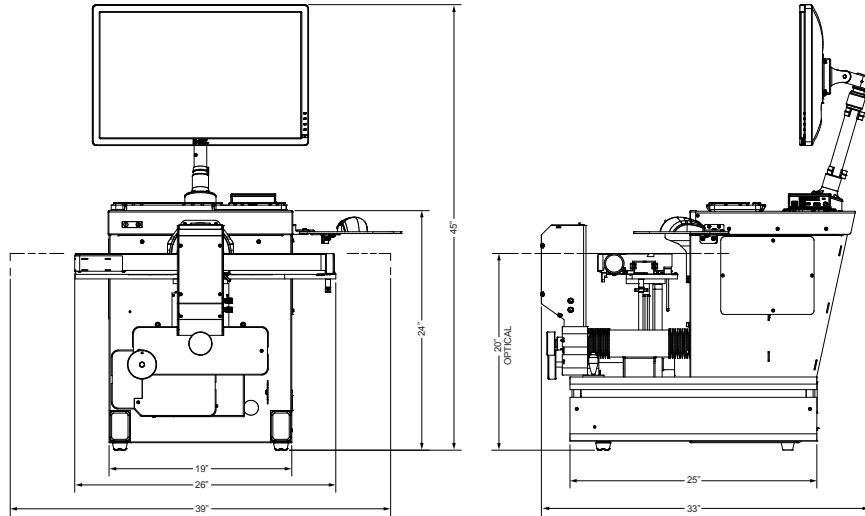
### SNAP-X Compare Software

SNAP-X Compare software provides a range of standard comparator charts for virtual gaging such as centerline and radius, as well as custom charts based on the part CAD design.



### SNAP-X Measure Software

SNAP-X Measure software provides fully automatic video measurement. SNAP-X SnapShot™ features instant measurement without programming.



System Weight: 285 lb  
Shipping Weight: 410 lb

	Standard	Optional	
<b>XYZ Travel Range</b>	12" x 5" x 1.5"		
<b>XY Scale Resolution</b>	0.00004"	0.00002"	
<b>Drive System</b>	Manual with quick release x-axis and fine adjustment knobs in X and Y	Motorized with variable speed joystick control and manual fine adjustment	
<b>Worktable</b>	Hard coat anodized aluminum worktable, 16" x 5", with dovetail fixturing slot with 45 lb load capacity		
<b>Helix Angle Range</b>	± 6.5° with pivoting worktable assembly and zero stop		
<b>Throat Clearance</b>	11.0"		
<b>Optics</b>	Telecentric, upright and fully corrected image with three field of view sizes	Optional motorized three-lens turret with nine field of view sizes	
<b>Illumination</b>	Green LED profile light with continuously variable intensity	Green LED oblique (dark field) ring light with eight selectable patterns and continuously variable intensity	
<b>Magnification Lenses</b>	<b>Standard Magnification Lens</b> 1.88" Field of View (FOV) 1.5" Depth of Field (DOF) 4" Working Distance (WD)	<b>2x Medium Magnification Lens</b> 0.94" Field of View (FOV) 1" Depth of Field (DOF) 4" Working Distance (WD)	<b>4x High Magnification Lens</b> 0.47" Field of View (FOV) 0.5" Depth of Field (DOF) 4" Working Distance (WD)
<b>Metrology Camera</b>	Digital megapixel metrology camera		
<b>Software</b>	SNAP-X Measure and Compare	SNAP-X Analyze, SNAP-X Offline, OGP® EVOLVE® SPC	
<b>System Controller</b>	Micro system controller with Windows®		
<b>Accessories</b>		Motorized rotary indexer; Calibration reticles; Ergonomic, motorized adjustable height stand; Steel weldment stand; Rotary vise; Staging centers and V-blocks	
<b>Power Requirements</b>	100-120 VAC or 200-240 VAC, 50/60 Hz, 1 phase, 400W		
<b>Safe Operating Environment</b>	59°-86° F, non-condensing		
<b>Rated Environment</b>	64°-72° F, stable at ± 2° F; 30%-80% humidity; vibration <0.001g below 15 Hz		
<b>Stage Accuracy (E<sub>2</sub>)</b>	(400+10L) μinch		
<b>Field of View Accuracy (E<sub>2</sub>)</b>	Low Mag: 0.0004"	2x Med Mag: 0.0003" 4x High Mag: 0.0002"	

Accuracy is evaluated with a QVI verification procedure where "L" is measured length in inches. Specifications apply within the rated environment. FOV accuracy specifications are verified at the lowest digital zoom level at each optical magnification. XY Accuracy applies with an evenly distributed load up to 11 lb in the standard measuring plane. The standard measuring plane is defined as perpendicular to the optical axis within 0.02 inch, and within 0.20 inch of best focus. Depending on load distribution, accuracy at maximum payload may be less than standard.



World Headquarters: Rochester, NY, USA • 585.544.0400 • www.ogpnet.com

OGP Shanghai Co, Ltd: Shanghai, China  
86.21.5045.8383/8989 • www.smartscope.com.cn

OGP Messtechnik GmbH: Hofheim-Wallau, Germany  
49.6122.9968.0 • www.ogpmesstechnik.de

Optical Gaging (S) Pte Ltd: Singapore • 65.6741.8880 • www.smartscope.com.sg